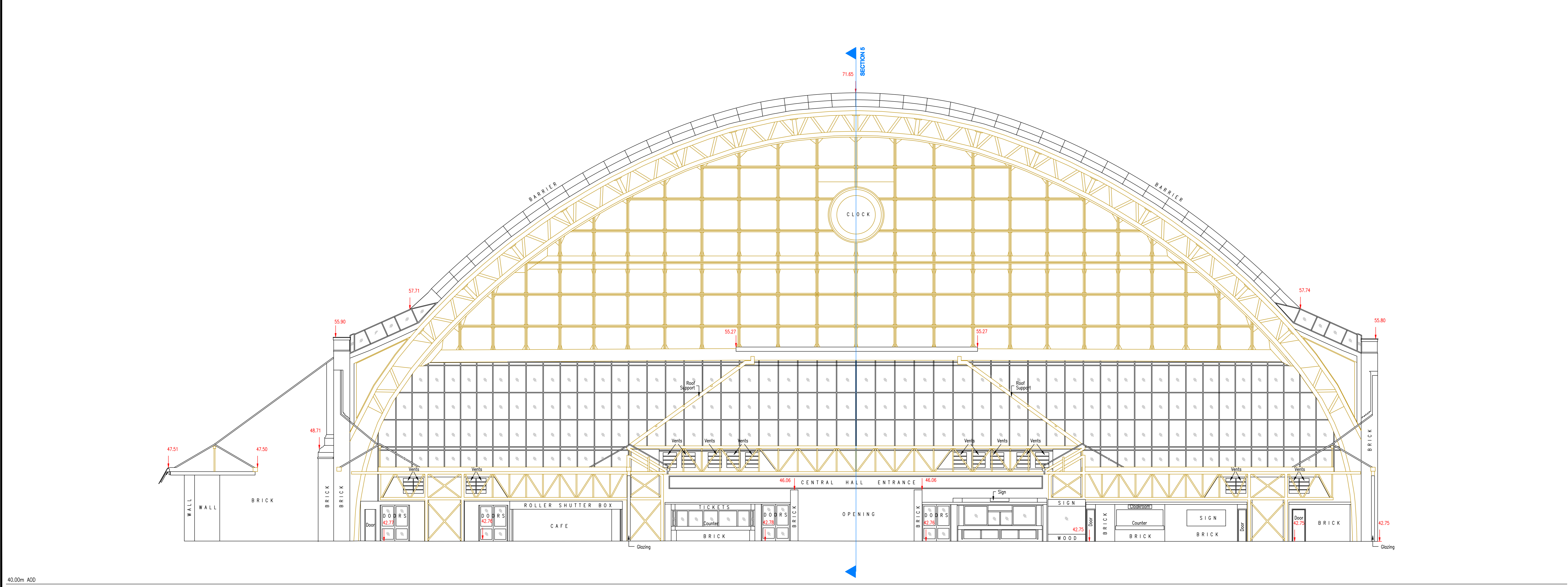


40.00m AOD

SECTION 1



40.00m AOD

SECTION 3

Notes

KEY

Datum -

ABBREVIATIONS

AOD - ABOVE ORDNANCE DATUM
 SL - SOFFIT LEVEL

Rev	Date	Drawn	Description	Checked	Applied
0	30.01.07		Original Drawing		

N D OLIVER & CO
 CONSULTING ENGINEERS

N D Oliver & Co Ltd
 Ptolemy House
 7 School Road
 Sale
 Manchester M33 7XY

Telephone 0161 973 3496
 Facsimile 0161 982 8219
 Email: info@ndoliver.com

RICS